



VE80



Our older children in Red Kites and Barn Owls attended the Toft Monks Parish Church afternoon tea event on Thursday 8th May.

We were invited to join our local community in recognising the service given during WWII. Our children were able to ask the older generation questions about life during the war and about what school life was like when they were young. We also got to ring the church bells. Our children did us proud!



Staffing update

Our wonderful TA Ms Jermy is going to train to be a teacher. We know she will be brilliant. It means she will leave us at the end of the summer term. We wanted to share her good news with you all.

SATs

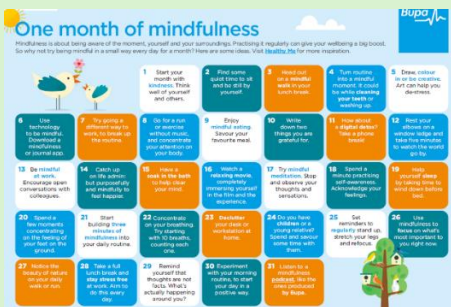
Our Year 6 pupils have been working very hard at Glebeland over the years and will be completing their SATs next week. We want to support our young people to achieve the very best they can (not only during examinations), so they are well prepared for the next phase of their educational journey when they move onto high school.

Mental Health

Mental Health Awareness Week this year is
Monday 12th – Sunday 18th May 2025.

This week is an opportunity to shine a light on the importance of everyone's mental health. Please find a month of mindfulness ideas PDF attached and a link to Mind:

<https://www.mind.org.uk/get-involved/mental-health-awareness-week/>



Lockdown/Fire drill

The Department for Education expects schools to have a lockdown plan in place. On Monday 19th our teachers will talk with their class about 'lockdowns' and how they are different to a fire drill. We will use child-friendly language to explain what to do, if it wasn't safe to leave the building immediately. If we had to stay inside, there would be a whistle blown, and we would all stay in our classrooms. We want to avoid any detailed examples or scenarios of why we'd have a lockdown, so as not to cause unnecessary worry. I wanted families to know prior to our sharing this information with our children and to invite you to discuss this with me further if you wish.

Have a great weekend from all of us at Glebeland.

Dates

Monday 12th May – SATs week

Tuesday 13th May – 3:15-4:00pm Recreation Club

Wednesday 14th May – 3:15-4:00pm Lego Club

Friday 16th May – 2:45pm Celebration Assembly